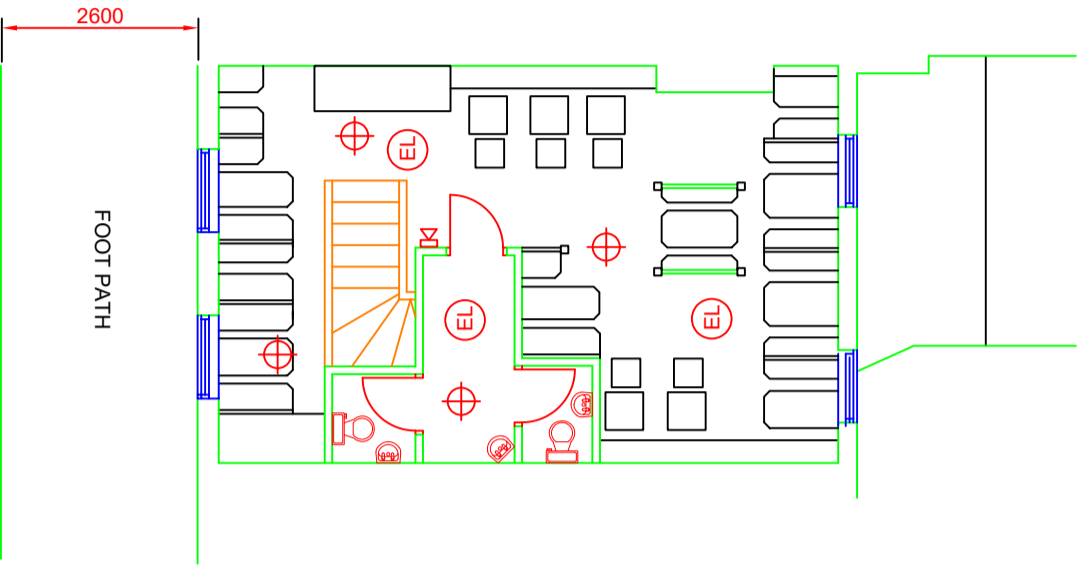
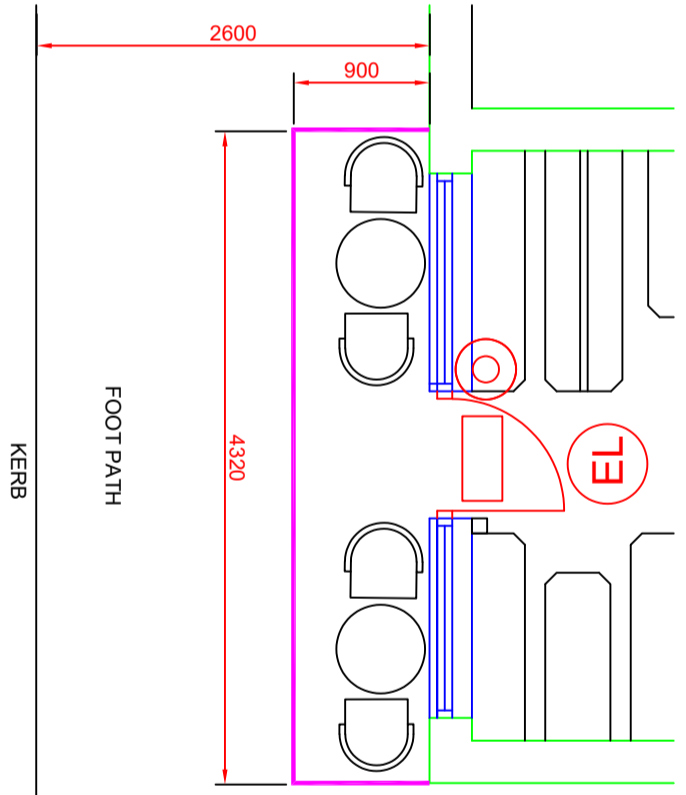


RevNo	Revision note	Date	Signature	Checked



GROUND FLOOR AS EXISTING SCALE 1:100



LICENSABLE ACTIVITY AREA SCALE 1:50

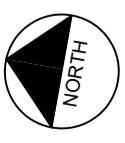


- TABLE:**
- SYNTHETIC TEAK TOP
 - POLISHED ALUMINIUM BASE
 - PROTECTIVE CLEAR LACQUER COATING
 - WATER RESISTANT
 - UV RESISTANT
 - ADJUSTABLE FEET
 - 70CM DIAMETER TOP




- CHAIR MEASUREMENT:**
- HEIGHT: 91 CM
 - WIDTH: 47 CM
 - DEPTH: 62 CM
 - SEAT HEIGHT: 43 CM
 - LEG LENGTH: 26 CM
- DETAILS**
- MATERIAL: SYNTHETIC WICKER
 - LEG MATERIAL: ALUMINIUM
 - MAX. WEIGHT SUPPORTED: 110 KG
 - USE: OUTDOOR
 - COLOUR BLACK & WHITE

PROPOSED CHAIRS & TABLES DETAILS



PAVEMENT LICENCE

<p>Consultant</p>  <p>AMA UK CONSULTANCY LTD Civil/Structural and planning Consultants Friars House, Manor House Drive Coventry, CV1 2TA Tel: 02476 982010, Mob: 07852125530 info@ama-consultancy.com</p>			
<p>Address</p> <p>108 REGENT STREET LEAMINGTON SPA CV32 4NR</p>			
<p>Title</p> <p>PAVEMENT LICENCE PLAN</p>			
<p>Drawn</p> <p>RM</p>	<p>Checked</p> <p>AN</p>	<p>Approved</p> <p>AN</p>	
<p>Dwg No.</p> <p>AMA-934-002</p>			
<p>Scale</p> <p>STATED</p>	<p>Date</p> <p>24.09.24</p>	<p>Revision</p> <p>-</p>	