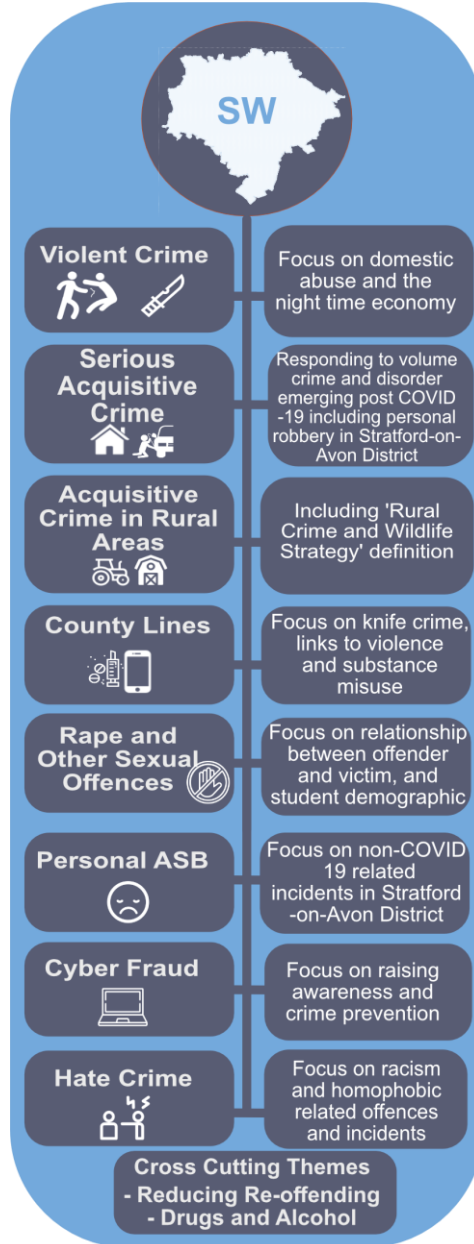




Warwick District Crime and Disorder Overview, May 2024

Confirmed Priorities for 2021/22

The below priorities were agreed at the South Warwickshire CSP Board on 26th February 2021:





Warwick District Crime and Disorder Overview, May 2024

Data Table for Crime and Disorder – Warwick District

The below table shows crime and disorder data for 1st April 2023 – 31st March 2024 in comparison to the previous year, using a colour coded RAG¹ status:

	Indicator	2022/23 Total	2023/24 Total	Performance vs same period 22/23
Priority Theme: Violent Crime focusing on Domestic Abuse and NTE	Violence with injury	1,110	987	-11.1%
	Violence with injury - domestic abuse flag	327	295	-9.8%
	Violence with injury - domestic abuse flag - as a % of total violence with injury	29%	30%	0.4%
	Violence without injury	2,630	2,200	-16.3%
	Violence without injury - domestic abuse flag	935	758	-18.9%
	Violence without injury - domestic abuse flag - as a % of total violence without injury	36%	34%	-1.1%
Priority Theme: Rape and Other Sexual Offences	Rape	129	139	7.8%
	Other sexual offences	289	258	-10.7%
Priority Theme: County Lines focusing on: knife crime, links to violence, substance misuse and exploitation in Warwick District	Section 18 Wounding	67	65	-3.0%
	Section 20 Wounding	44	40	-9.1%
	Knife Related Violence	75	73	-2.7%
	Possession of Article with Blade or Point	58	56	-3.4%
	Possession of Other Weapons	45	64	42.2%
	Violence with and without injury - Alcohol Related Flag	281	246	-12.5%
	Violence with and without injury - Drugs Related Flag	23	16	-30.4%
	Possession of Controlled Drugs (Cannabis)	89	84	-5.6%
	Possession of Controlled Drugs (Excluding Cannabis)	50	40	-20.0%
	Other Drug Offences (including 'Trafficking of Controlled Drugs')	102	101	-1.0%
Priority Theme: Serious Acquisitive Crime	CSE Offences and Non Crimed Investigations	63	35	-44.4%
	Modern Slavery	0	0	0.0%
Priority Theme: Serious Acquisitive Crime	Residential burglary (dwelling only)	284	248	-12.7%
	Theft from vehicle	643	569	-11.5%
	Theft of vehicle	193	210	8.8%
Priority Theme: Acquisitive Crime in Rural Areas	Rural Crime Offences*	90	99	10.0%
Priority Theme: Hate Crime	Hate Offences and Non Crimed Investigations	312	253	-18.9%
Priority Theme: Cyber Fraud	Cyber Fraud Offences**	73	59	-19.2%
Other Performance Measures of Note:	Total Anti-Social Behaviour Incidents	2,172	1,826	-15.9%
	Personal	347	428	23.3%
	Nuisance	1,639	1,221	-25.5%
	Environmental	186	177	-4.8%
	Deliberate Small Fire Incidents (DSFs)	57	26	-54.4%
Other Performance Measures of Note:	Domestic Abuse Offences and Non Crimed Investigations	2,505	2,086	-16.7%



Warwick District Crime and Disorder Overview, May 2024

Notes to the Data Table:

¹ Red for increases of 5% and over; amber for increases or decreases of less than 5%; green for decreases of 5% and over.

* This is based on themes specific to the rural crime strategy (e.g. acquisitive crime on farms, equine, livestock offences, etc). This is a new measure for 2019.

** 'Cyber Fraud - Theft' offences only incorporate offences with a cyber flag relating to 'Theft,' Theft other' and 'blackmail' offences. Data has only been captured from April 2020 and is therefore only comparable from April to December 2020 and 2021.

Sources: STORM Incident System, Warwickshire Police; Business Objects Crime Information System, Warwickshire Police; MARAC Performance Data, Refuge; Deliberate Small Fires, Warwickshire Fire and Rescue; KSI data, Road Safety Team WCC; Rural Crime Officer, Warwickshire Police

Crime and Disorder Overview for Warwick District

Analysis of crime trends over the last 12 months shows that total recorded crime in Warwick District has reduced by -9%. This is compared to the -4% reduction at county level. The largest volume and proportional reductions have been seen within violence offences, most notably those relating to domestic violence. It is likely that a large proportion of this reduction in volumes is due to the changes to Home Office Counting Rules that came into force on the 1st May 23 which has affected how domestic abuse is recorded (*linked to the recording of stalking, harassment and engaging in controlling and coercive behaviour, and malicious communications*).

Domestic Violence - South Warwickshire has seen the highest proportional increase in referrals to Refuge for domestic abuse during this 12-month period, compared to a slight reduction in cases discussed at MARAC. However, analysis suggests that this is due to referrals mainly being for medium risk cases. Indeed, rates of domestic violence with injury offences in Warwick District are now the lowest in the county, at 1.95 offences per 1,000 population, suggesting that these reductions represent a positive trend in reduced volumes of offences rather than a lack of reporting. Mental health and alcohol are areas of note for cases referred to South Warwickshire MARAC.

Serious Violence - Offences relating to serious violence have slightly reduced in volume compared to the previous 12-month period in the district and this is not a countywide trend. However, Warwick District has had the highest proportion of non-domestic violence with injury offences occurring in licensed premises this 12-month period (10% compared to 6% for Warwickshire), and four of the six public place locations in Warwickshire with 10 or more non-domestic violence with injury offences are in Leamington. Warwick Street, High Street, Pump Room Gardens and the Parade are all locations of note in the 12-month period.

Possession of other weapons offences - volumes of possession of other weapons offences in the district during this latest 12-month period are higher than the previous year. However, this is a countywide trend with a number of local and national campaigns and initiatives likely to have contributed to this increase.

Absence and exclusions from Schools - In the academic year 22/23 schools in Warwick District had amongst the lowest absence and exclusion rates in the county. However, the trend for persistent absence in secondary schools in the district is increasing and may be an area of concern for the CSP to monitor.



Warwick District Crime and Disorder Overview, May 2024

Deliberate small fires - Volumes of deliberate small fires have also reduced over the last 12 months in all districts and boroughs, and this is an area closely linked to the changes in the weather and seasonal trends. Of note is the possible rise in temperatures during the summer period in 2024 that has been reported nationally in recent weeks¹. This is likely to lead to significant increases in general fire related incidents in the county and is a risk area of note.

Hate crime offences in Warwick District have reduced compared to last year, with this reducing trend occurring across the county. It is not clear if this represents a genuine reduction in reports or if this masks a higher volume of unreported offences. Indeed, reports to support services are also low. This reducing trend is despite a year of significant religious and racial tensions internationally which further suggests possible unreported incidents. Of note is the increasing volumes of reports of hate incidents in schools, with reports from schools in Warwick District nearly doubling compared to the previous 12-month period and with almost all incidents relating to racial comments.

Business crime – Offences of business crime in the district has increased this year, largely due to a 9% increase in shoplifting (+69 offences). Leamington town centre and Warwick Gates North, Tachbrook Park and Myton South LSOA have recorded the most offences in the district.

¹ [UK told to prepare for 'big and historic' heatwave before Saharan scorcher within days - Birmingham Live \(birminghammail.co.uk\)](https://www.birminghammail.co.uk/news/uk-told-to-prepare-for-big-and-historic-heatwave-before-saharan-scorchers-within-days-17851111), May 24.