

# 2022 A year of... South Warwickshire Place



In South Warwickshire the NHS, Local Government and Voluntary Sector are working closely together to support the unique needs of our local communities. Here are some of the highlights of the things we have been jointly working on during 2022.....

We began the year by re-affirming our vision, principles and priorities for South Warwickshire Place. This will help us collectively support all of our residents to live well and to have full active independent lives.



As a partnership we have done work with auditors to help us set our risk appetite. We found that we were more open to taking risk than we had previously thought, particularly where we felt the areas required urgent intervention and would have the biggest impact for our communities.



We were successful in being awarded a place on the Local Government Association Place Development Programme. The purpose of the programme is to help support our Place Partnership whilst considering our local challenges and priorities. Through this work we identified the need to support children in crisis (more information on this below).



Partners across South Warwickshire are supporting the implementation of a free app and website called Tribe. Tribe holds information on all kinds of local groups and activities. It is being piloted in Shipston and South Leamington. The purpose of Tribe is to help people connect with others and find healthy living activities.



A plan for South Warwickshire Place was approved. Activities within the plan are aligned to our priorities;

- Respiratory and inequalities
- Environment and sustainability
- Infants, children and young people
- Covid-19 response and recovery
- Mental health, suicide and bereavement



We are working with partners across Warwickshire to develop an initiative which will enable all people in an acute hospital in Warwickshire, who need further support, to access timely therapeutic intermediate care services on discharge. The project will support individuals to recover and maximise their outcomes.



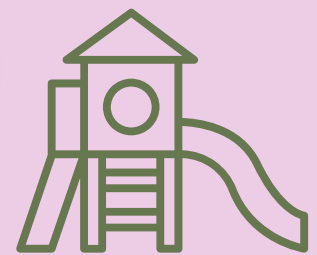
Stratford District Council and Warwick District Council have worked closely with partners across South Warwickshire to develop investment plans for the UK Shared Prosperity Fund, which include a number of health and well-being projects to be implemented over the next 3 years.

As a partnership we are responding to the increase in children experiencing poor mental health. As a result of this joined up working, a prevention project is being piloted through the South Warwickshire Place. The aim of the project is to prevent children and young people in South Warwickshire reaching crisis point, through the use of a social prescribing offer with dedicated care coordinators.



As part of the Place Development Programme the Local Government Association led a peer review. South Warwickshire Place received positive feedback on how we have built effective relationships amongst partners and provided recommendations to help us continue in our journey.

All partners have learnt about Child Friendly Warwickshire and become part of its network of friends. See more about how Child Friendly Warwickshire encourages everyone to work together to ensure the best outcomes for our children and young people in Warwickshire: [www.childfriendlywarwickshire.co.uk](http://www.childfriendlywarwickshire.co.uk)



A fantastic new healthcare facility is being created in Lillington. The modern, co-produced development will integrate primary care services alongside a range of community health teams and will support increased access to vital services for the local population. The development is expected to complete in November 2023.



Thank you for your commitment to partnership working, we look forward to continue delivering projects to support our communities in South Warwickshire during 2023.

Anne Coyle & Chris Elliott

Joint Chairs of the Place Partnership Board

